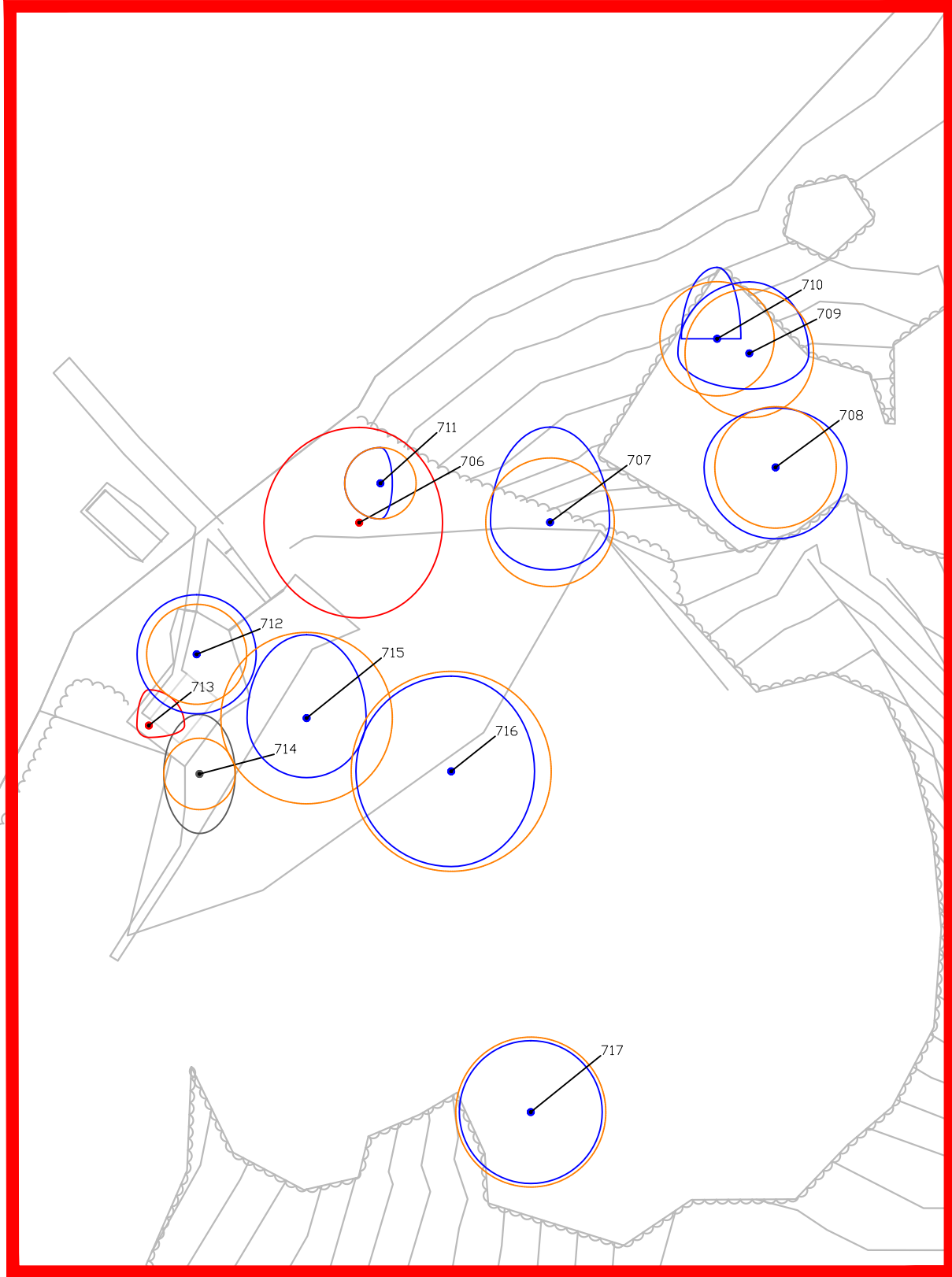


AREA 1 SCALE 1:500



- LEGEND**
- TREE CONDITION CATEGORIES**
- A TREES OF HIGH VALUE AND QUALITY
  - B TREES OF MODERATE VALUE AND QUALITY
  - C TREES OF LOW QUALITY AND VALUE
  - U TREES OF VERY LOW QUALITY AND VALUE RECOMMENDED FOR REMOVAL
  - TREE CONSTRAINTS
- SURVEY BOUNDARIES

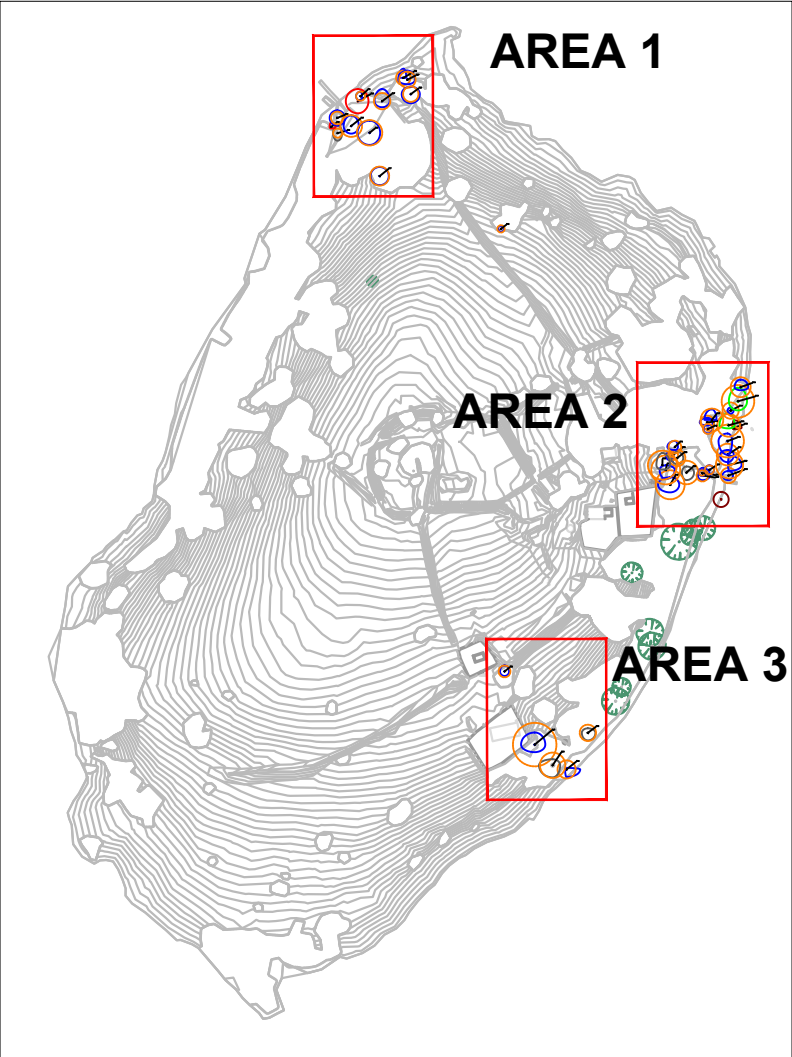
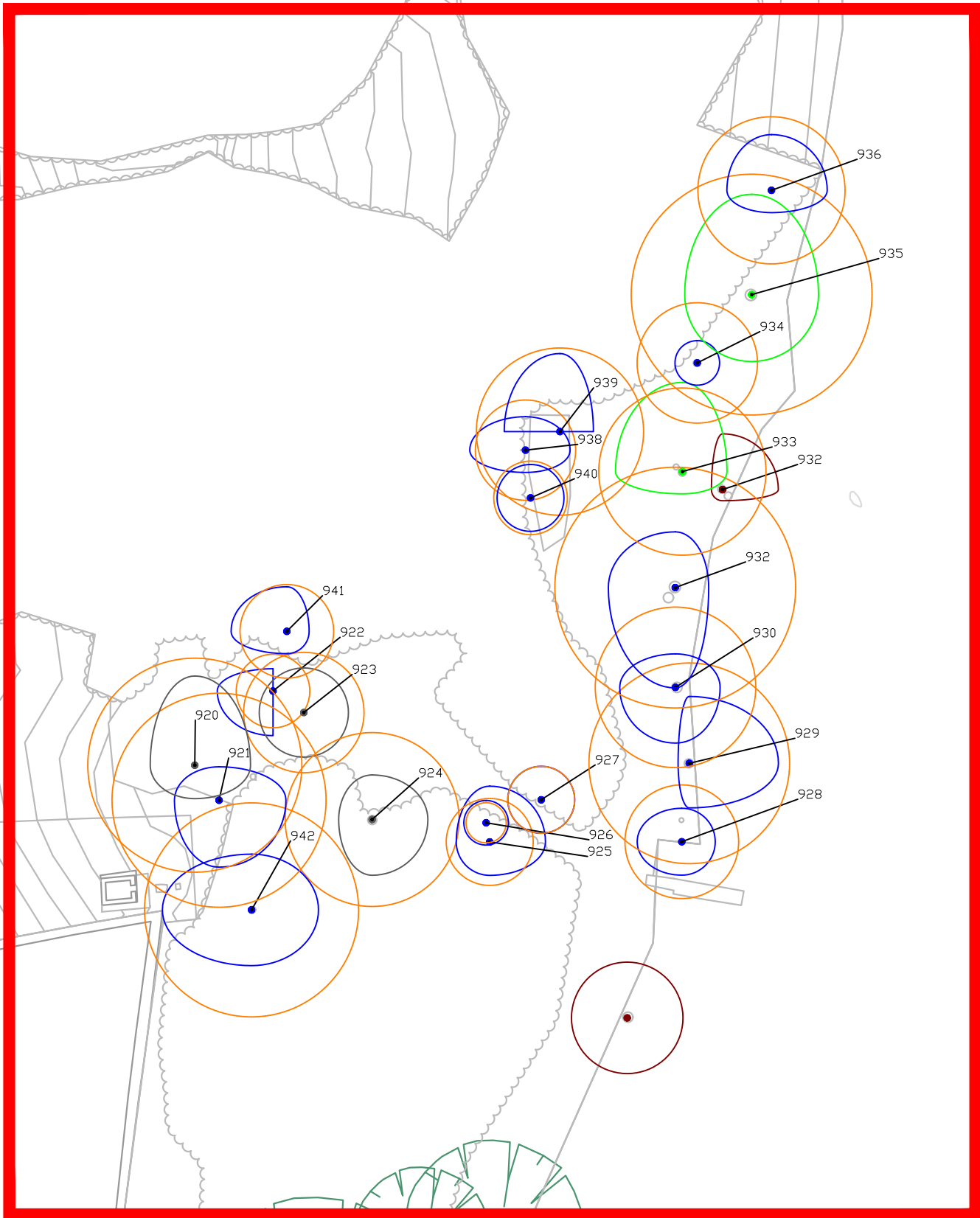
DRAWING TO BE INTERPRETED WITH REFERENCE TO THE ACCOMPANYING ARBORICULTURAL ASSESSMENT DOCUMENT WHERE TOPOGRAPHICAL LOCATIONS OF TREES ARE NOT PROVIDED THE LOCATIONS OF TREES CAN BE CONSIDERED APPROXIMATE ONLY.

TREE CONSTRAINTS SHOWN ARE CALCULATED FROM GUIDELINES CONTAINED WITHIN BS5837 (2012). THIS OUTLINE SHOULD NOT BE INTERPRETED AS THE EXTENT OF ROOT SPREAD HOWEVER IT IS CONSIDERED THE OPTIMAL AREA TO BE RETAINED FREE OF DEVELOPMENTAL IMPACTS. NATURAL AND/OR MAN MADE BARRIERS SUCH AS WATERLOGGED SOIL OR BUILDINGS MAY RESTRICT THE SPREAD OF TREE ROOTS.

CROWN SPREADS MAY ALSO PROVE TO BE A CONSTRAINT PARTICULARLY WHERE CROWN REDUCTION MAY NOT BE POSSIBLE.

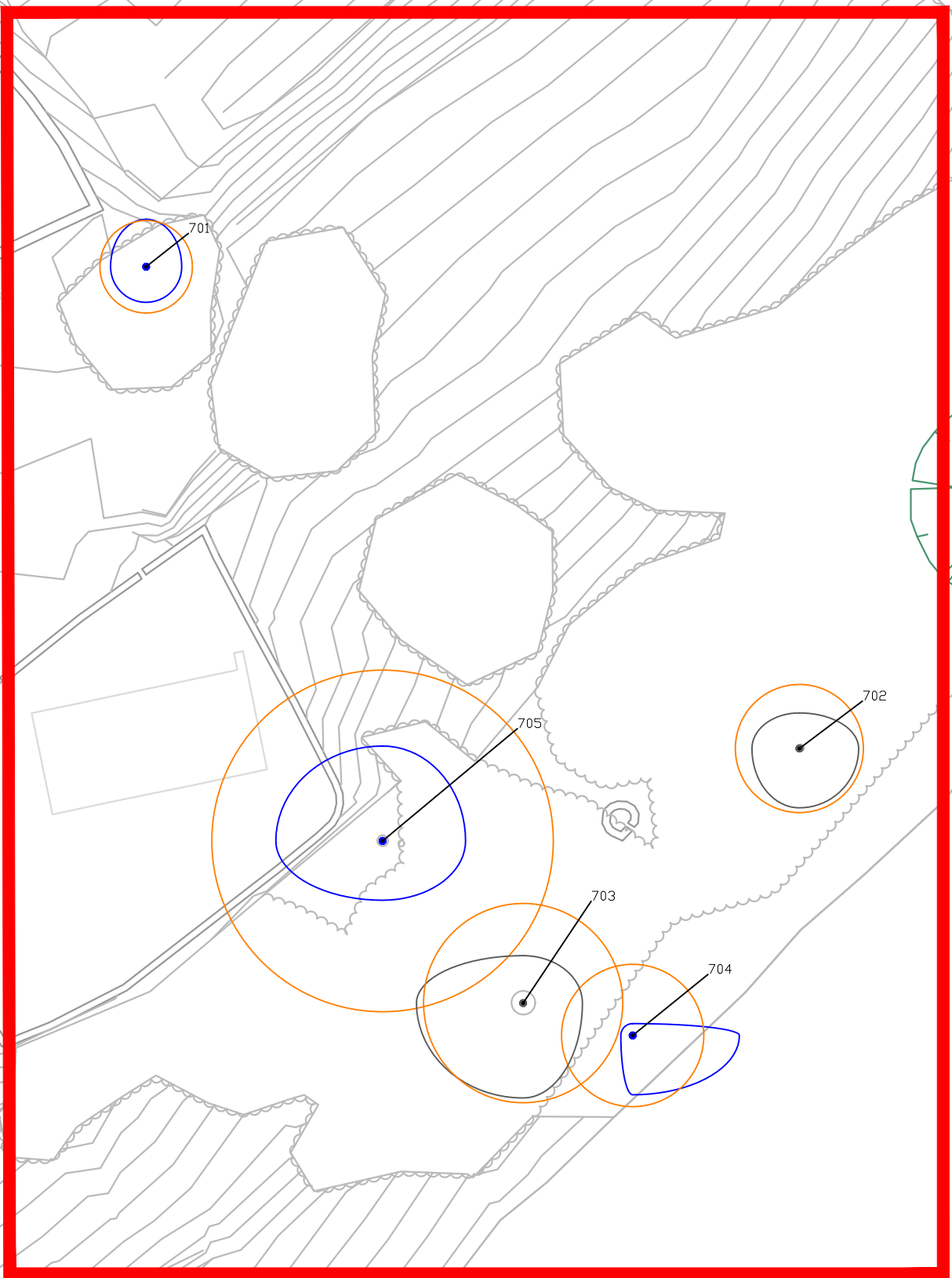
THE CONSTRAINTS LINES SHOWN ON THIS DRAWING ARE THEREFORE A GUIDE ONLY. AN ON-SITE ASSESSMENT SHOULD BE UNDERTAKEN IN THE EVENT OF ANY WORKS BEING PLANNED WITHIN AREAS WHERE TREES ARE TO BE RETAINED.

AREA 2 SCALE 1:500



ENTIRE ISLAND: NTS

AREA 3 SCALE 1:500



REVISIONS		
REV	DATE	DESCRIPTION
PROJECT:		JOB NO.
INIS CEALTRA		TIN002
DRAWING:	DATE:	SCALE:
TREE SURVEY AND CONSTRAINTS	15-10-24	1:500@ A1
DRAWN BY: CIARAN KEATING	CK	INITIALS
STATUS: INFORMATION		
DRAWING NO: TIN-002-101		
NOTES		
© THIS DRAWING IS COPYRIGHT OF CMM ARBORICULTURE & LANDSCAPE LTD.		

